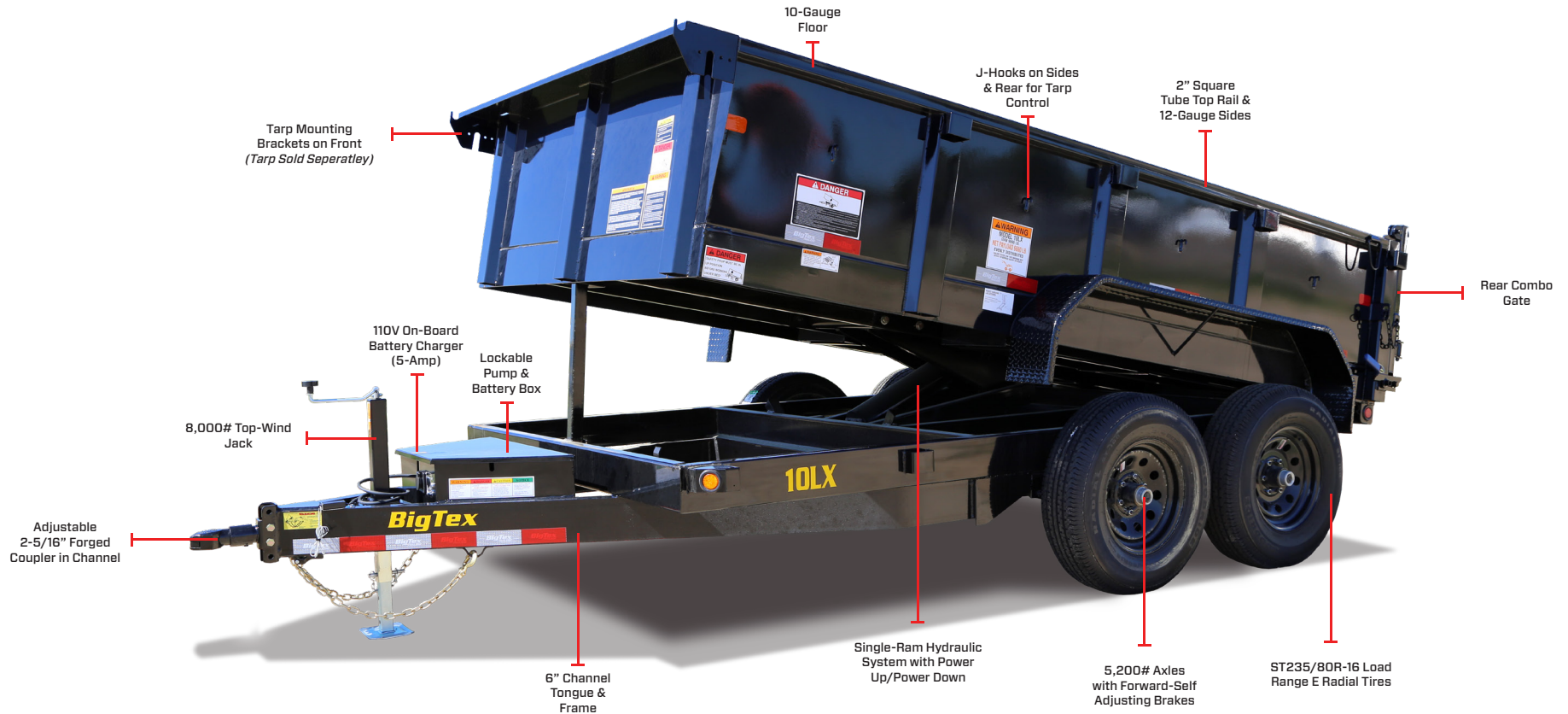


# 10LX

# PRO SERIES TANDEM AXLE EXTRA WIDE DUMP TRAILER



- GVWR: 9,990#
- LOAD CAPACITY: 6,830# (10') - 6,490# (12')
- AVAILABLE LENGTHS: 10', 12'
- BED WIDTH: 83" WIDE
- COUPLER: Bumper Pull
- CARGO CAPACITY: 5.2 yd<sup>3</sup> (10') - 6.1 yd<sup>3</sup> (12')
- DUMP ANGLE: 40°
- DUMP SIDE HEIGHT: 24"
- AXLES: Tandem (2 x 5,200#)
- DECK HEIGHT: 31-3/4"



### RESILIENT 10-GAUGE STEEL FLOOR

The robust 10-gauge steel floor is built to withstand tough conditions, ensuring durability and long-lasting performance for your trailer over time.



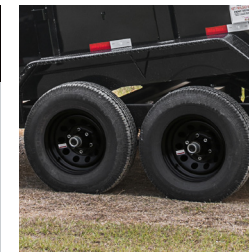
### HYDRAULIC SINGLE CYLINDER LIFT

The 10LX is equipped with a self-contained electric/hydraulic single cylinder lift designed to make dumping and spreading aggregates smooth and easy.



### MULTI-FUNCTION REAR COMBO GATE

The Rear Combo Gate, featuring both barn doors and a spreader gate, simplifies loading, unloading, and spreading, providing exceptional flexibility for various applications.



### EFFORTLESS MAINTENANCE

Our forward self-adjusting brakes make brake maintenance a breeze. The system automatically adjusts the brake shoes as they wear down, eliminating the need for manual adjustments.